

# Ford Service Information Websites

# Professional Technician Society (PTS) Website

- Ford/Lincoln/Mercury Dealerships
- 40,000 Technicians
- Secure Access
- Content: Service Information, Technical Training, Tools & Equipment, Hotline, vReps, etc.
- HTML Based (PDF for Printing)

# Ford Technical Resource Center

- Aftermarket 24/7 Access
- “Real Time” Access
- Long. Medium, Short Term Access
- Content: TSBs, Shop Manuals, Wiring Diagrams, Tools & Equipment, etc.
- HTML Based (PDF for Printing)

# Available Information

## Workshop Manuals, Wiring Diag. PC/ED

- 1994 OBDII (Mustang, T-Bird)
- 1996 All

## TSBs

- 1989 Forward

## Diagnostic Tool Information

## Miscellaneous Publications

- Towing Guide
- Camper Loading Manual

# Technical Resource Center

TECHNICAL RESOURCE CENTER HOME PAGE - Microsoft Internet Explorer provided by Ford Motor Company

File Edit View Favorites Tools Help

Back Forward Stop Home Search Favorites History Print

Address <http://www.fordinstallersupport.com/> Go Links

WELCOME TO THE  
**Technical Resource Center**

**GENUINE PARTS** | *Ford Motor Company*

**LOGIN** Comprehensive Technical Information and Support

User name:

Password:

**ENTER** ▶

**Edit Account Info.** ▶


**Reset Password** ▶

**Forgot Password?** ▶

**REGISTER NOW**

**Set Up An Account** ▶▶

**Dealer Admin Login** ▶



**WELCOME TECHNICIANS!**  
Here you can access technical information for Ford, Lincoln and Mercury vehicles - directly from Ford Motor Company.

**WHAT'S INSIDE**

- TSBs
- Service Publications
- Vehicle-specific information
- And lots more...

Qualified installers and technicians must register to login.

**Want access to this great resource?  
Contact your Certified Parts Wholesaling  
Ford, Lincoln or Mercury Dealership.**

[Privacy](#) • [Contact Us](#)

©Copyright 2002 Ford Motor Company. All rights reserved

Internet

# Technical Service Bulletins (TSBs)

## Search Options:

- Article #
- Year Model
- Symptom Code
- Word Search
- Publication Index

The screenshot shows a Microsoft Internet Explorer browser window displaying the Ford Motor Company's Technical Service Bulletins (TSBs) website. The browser's address bar shows the URL: [http://www.fordtechservice.dealerconnection.com/vdirs/SPubs/default.asp?pageid=spubs\\_tsb](http://www.fordtechservice.dealerconnection.com/vdirs/SPubs/default.asp?pageid=spubs_tsb). The website header includes the text "WELCOME TO THE Technical Resource Center" and the "GENUINE PARTS Ford Motor Company" logo. A left-hand navigation menu lists various categories, with "TSBs" selected. The main content area features the heading "SERVICE PUBLICATIONS TECHNICAL SERVICE BULLETINS" and a paragraph stating: "This site includes Technical Service Bulletins published from 1988 to present. These bulletins are targeted for U.S Dealers and fleets. Some or all of the provisions specified in these bulletins may not apply to non-U.S. markets." Below this text, a yellow banner reads "Adobe Acrobat is installed". A subsequent line of text states: "Adobe Acrobat is required to view PDF's (Printer-friendly versions) in TSBs and Field Service Actions". On the right side of the page, a "QUERIES" section provides search options: "Article Number" (Search by article number), "Year and Model" (Search by year and model), "Symptom Code" (search by symptom code), "Word Search" (search for specific words), and "Publication Index / Parts Pages" (Search the TSB Index). The footer of the website contains the copyright notice "@Copyright 2002 Ford Motor Company. All rights reserved" and links for "Privacy" and "Contact Us". The browser's status bar at the bottom shows "Done" and "Internet".

# Technical Service Bulletins (TSBs)

## Search Options: - Symptom Code

- . 1996
- . F-Series
- . Drivability
- . No Start

The screenshot shows a Microsoft Internet Explorer browser window displaying the Ford Motor Company's Technical Resource Center. The address bar shows the URL: [http://www.fordtechservice.dealerconnection.com/vdirs/SPubs/default.asp?pageid=spubs\\_tsb\\_sc&gutsid=spubs\\_tsb\\_all&TYPE=SYMPTDM](http://www.fordtechservice.dealerconnection.com/vdirs/SPubs/default.asp?pageid=spubs_tsb_sc&gutsid=spubs_tsb_all&TYPE=SYMPTDM). The page features a navigation menu on the left with categories like 'Technical Resource Center', 'Rotunda Tools & Equipment', 'Service Publications', and 'WDS Diagnostic Equipment and Accessories'. The 'Service Publications' section is expanded to show 'TSBs' with sub-options: 'Article Number', 'By Year and Model', 'By Symptom Code' (selected), 'Word Search', and 'Publication Index / Parts Pages'. The main content area is titled 'WELCOME TO THE Technical Resource Center' and includes a 'GENUINE PARTS Ford Motor Company' logo. A central graphic reads 'SERVICE PUBLICATIONS TECHNICAL SERVICE BULLETINS' with a search button that says 'Search by year, model and symptom code'. Below this, there are two columns of dropdown menus: 'Year' (set to 1996) and 'Model' (set to F-SERIES), and 'Category' (set to Drivability) and 'Symptom Code' (set to 603300 - No Start). A 'Get TSBs' button is located below the dropdowns. The footer contains copyright information: '@Copyright 2002 Ford Motor Company. All rights reserved' and links for 'Privacy' and 'Contact Us'.

# Technical Service Bulletins (TSBs)

## Search Options: - Symptom Code

- . 1996
- . F-Series
- . Drivability
- . No Start

## - Index

WELCOME TO THE  
**Technical Resource Center**

GENUINE PARTS | Ford Motor Company

Technical Resource Center | TSBs |

*Ford Motor Company*  
1996 F-SERIES  
Symptom Code: 603300 - No Start

- [02-10-05](#)
  - DRIVEABILITY - BI-FUEL CNG/LPG LOW FLOW INJECTOR SERVICE KIT WITHOUT COOLANT LOCK-OFF
  - DRIVEABILITY - CRANK NO START - BI-FUEL CNG/LPG VEHICLES - LOW FLOW INJECTOR SERVICE KIT WITHOUT COOLANT LOCK-OFF
- [01-15-02](#)
  - DRIVEABILITY - BI-FUEL - NO START IN BI-FUEL MODE - ALT FUEL LIGHT ON - VEHICLES EQUIPPED WITH BI-FUEL ENGINE ONLY
- [01-10-06](#)
  - DRIVEABILITY - BI-FUEL - COMPUVALVE PRE-REPLACEMENT CHECK LIST - SERVICE TIPS
- [00-23-09](#)
  - DRIVEABILITY - COMPUVALVE REPLACEMENT PROCEDURE - SERVICE TIP - BI-FUEL VEHICLES ONLY
  - ELECTRICAL - COMPUVALVE REPLACEMENT PROCEDURE - SERVICE TIP - BI-FUEL VEHICLES ONLY
  - ENGINE - COMPUVALVE REPLACEMENT PROCEDURE - SERVICE TIP - BI-FUEL VEHICLES ONLY

# Technical Service Bulletins (TSBs)

## Search Options:

- Symptom Code

- . 1996
- . F-Series
- . Drivability
- . No Start

- Index

- TSB: 02-10-5

- . Html
- . PDF

TSB 02-10-5 - Microsoft Internet Explorer provided by Ford Motor Company

File Edit View Favorites Tools Help

Back Forward Stop Home Search Favorites History

[Printable View \(112 KB\)](#)

<b>Article No.</b> 02-10-5	<ul style="list-style-type: none"><li>• DRIVEABILITY - BI-FUEL CNG/LPG LOW FLOW INJECTOR SERVICE KIT WITHOUT COOLANT LOCK-OFF</li><li>• DRIVEABILITY - CRANK NO START - BI-FUEL CNG/LPG VEHICLES - LOW FLOW INJECTOR SERVICE KIT WITHOUT COOLANT LOCK-OFF</li></ul>
-------------------------------	---

**Publication Date:** MAY 16, 2002

**FORD:** 1996-2002 F-150


**ISSUE:**

Some 1996-2002 Bi-Fuel CNG F-150's and 2000-2002 Bi-Fuel LPG F-150's (without coolant lock-off) may exhibit a no start condition. This may be caused by stuck Low Flow Injectors on the Compuvalve possibly due to fuel contamination. To avoid the replacement of the Compuvalve when only the Low Flow Injectors have failed, the Low Flow Injectors have been released separately for service.

**ACTION:**

If diagnosis leads to a failed Low Flow Injector, refer to the following removal and installation procedure to replace the Low Flow Injector assembly.

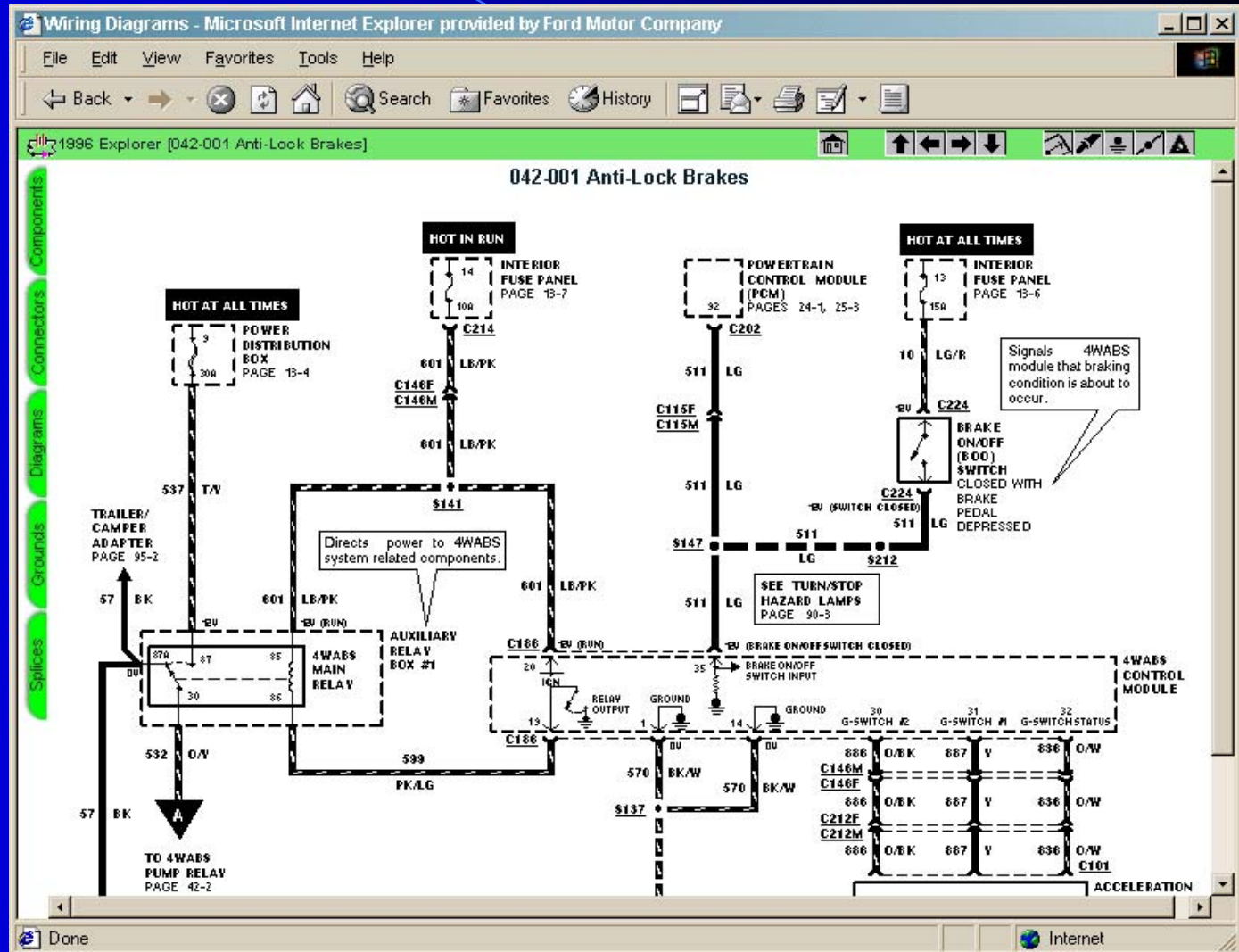
**SERVICE PROCEDURE**

 **WARNING:** WHEN SERVICING FUEL RELATED COMPONENTS, ELIMINATE ALL SOURCES OF IGNITION (E.G. TORCHES, HEATERS, AND LIGHTED TOBACCO). FLAMMABLE MIXTURES MAY BE PRESENT AND CAN IGNITE, RESULTING IN DAMAGE AND/OR INJURIES. THE FUEL SYSTEM LINE PRESSURE MUST BE RELIEVED BEFORE ANY COMPONENT CAN BE

Done Internet

# Wiring Diagram

1996 Explorer  
. ABS



Thank You!